

**St. Helens Camera Club**  
**Guidelines for Internal Competitions. (Version 14 updated April 2019)**  
*These guidelines apply to both Standard and Advanced Groups.*

These guidelines were produced to help members understand what type of image can be entered into the internal competitions and the rules applied. It is important to realise that these guidelines only apply to competitions within the St Helens Camera Club.

### Monochrome Images

A monochrome image consists of a range tones of one colour only. This is usually grey, but could be an image that is entirely toned with a single colour.

Images which are grey scale and have partial toning, or that are toned with more than one colour are not classed as monochrome and must be entered into the colour section.



monochrome



monochrome



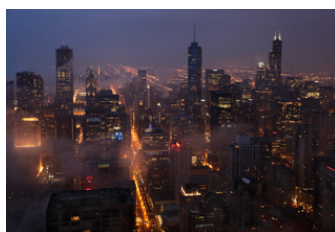
colour

### Print Size

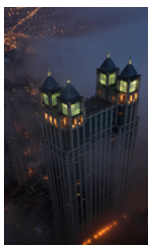
Prints can be any size, but the mount must be exactly 40cm x 50cm. Any other size of mount is not allowed to be entered into L&CPU competitions. The title and membership number (**but not your name**) must be written on the back of the print. **If window mounting your print, it must be backed (e.g. with double sided tape, so that there is no sticky tape on the back of the mount, as this could damage another print in contact with it.)**

### Digital files

Digital files for projection must be no wider than 1400 pixels and no taller than 1050 pixels, hence the **maximum** file size will be 1400 x 1050. This is now the standard resolution for L&CPU and the native resolution of the club's projector.



1400 x 990 **OK**



600 x 1050 **OK**



1400 x 1200 **Wrong**

The “bottom line” is: the dimensions of your image should “match” the dimensions of the projector in one direction and be smaller than (or the same as) the dimensions of the projector in the other direction. Please see “*Resize image for Camera Club projector*” on the website <http://sthelenscameraclub.org.uk>

Digital files for competitions should be saved as a JPEG in the sRGB colour space. If you are unsure of how to do this, search the web for instructions or ask a member for help. However, for most people, that will be the native format of their files.

## There are seven internal club competition categories:

### 1. Open Competition – no restrictions

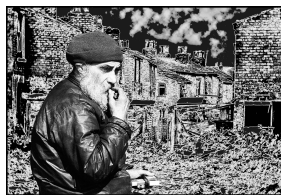
All subjects and treatments are eligible in these competitions, no matter how weird or wonderful the final image is. You are only limited by your imagination and your image editing/manipulation skills.

### 2. Open Competition – with restrictions

All subjects are eligible in these competitions provided the final image remains within the realms of reality. Please note that there are no restrictions on the image editing that may be used, you may clone, use layers and filters, copy from one image to another, but the final image must belong to the 'real world', i.e. it could exist.



eligible  
dog added to background  
final image looks real.



not eligible  
man added to background  
but treatment of background  
removes it from 'reality'.



not eligible  
Use of textured or  
transparent layer  
makes it 'unreal'.



not eligible  
Now if this was for real!!!!

Basically, images which involve 'altered reality' are not eligible. If you are unsure of the eligibility of an image for a competition ask the relevant secretary

### 3. Illustrative

This is an updated Record competition, but also includes any photograph that tells a story, or a photograph that could illustrate a story. The range of suitable subjects includes architecture and architectural detail, product photography, documentary photography, photo journalism and sport.

The essence of an illustrative image is its factual content.

Images which rely strongly on a pictorial element, such as landscapes or still life, are not classed as illustrative. Similarly, traditional portraits would not be seen to be illustrative.

Images may be modified/edited, but they must remain realistic.

The title of the photograph should be factual, creative titles are unsuitable for this category.

Nature images are not suitable for this category.

Examples of images that would be suitable for this category.



## 4. Nature

Note that images already meeting the separate FIAP Definition of Nature will satisfy this less restrictive definition.

Nature photography is restricted to the use of the photographic process to depict all branches of natural history, except anthropology and archaeology, in such a fashion that a well-informed person will be able to identify the subject material and certify its honest presentation.

The story telling value of a photograph must be weighed more than the pictorial quality while maintaining high technical quality.

Scientific bands, scientific tags or radio collars on wild animals are permissible. Photographs of human created hybrid plants, cultivated plants, feral animals, domestic animals, or mounted specimens are ineligible, as is any form of manipulation that alters the truth of the photographic statement.

Processing of the captured image, by cropping, exposure adjustment, colour correction, noise minimisation, dodging/burning, HDR, focus stacking and sharpening, is allowed. Cloning of image defects and minor distractions, including overlapping elements, are permitted when these do not distort the truth of the photographic statement.

Images entered as Nature can have landscape, geologic formations, weather phenomena, and extant organisms as the primary subject matter. This includes images taken with the subjects in controlled conditions, such as zoos, game farms, botanical gardens, aquariums and any enclosure where the subjects are totally dependent on man for food.

Access to biological subjects may be restricted.

By entering a St Helens Camera Club Competition or a PAGB event, Photographers warrant that they have followed relevant codes of practices and hold any necessary licences.

## 5. Portrait

A portrait attempts to convey some characteristic, personality or mood of the subject, as well as a likeness. The photograph can be formal or informal, single or group and need not just be 'head and shoulders'.

Environmental portraits, where the surroundings are an important part of the image, and figure studies are acceptable. **Please note: Human subjects only.**

## 6. Scapes

This includes landscapes, seascapes, waterscapes, skyscapes and cityscapes. People may be included, but must be incidental to the view captured, and not the main subject e.g. a distant walker on a country path.

## 7. Set Subject

**To be determined by club members nominating a subject for the competition, all the nominations to be placed in a hat and a single entry to be drawn from the hat and used as the Set Subject for that years competition.**

### All Seven internal club competitions

Contain three sections: Colour Print ( **CP** ), Mono Print ( **MP** ) and Projected Digital Image ( **PDI** ), with the exception of Natural History **and all the Standard Group competitions**, in which there will be no Mono Print section. (Any Mono Print entries will be judged in the Colour Print section.)

You may enter a total of 2 images in each competition.

Entry to the Competitions will be **via Photo Entry System**

Please see: "How to enter Club Competitions" on the website at <http://sthelenscameraclub.org.uk>

PDI's will be attached **via Photo Entry System**, prints will be handed in at the Club on the "handing in night".

Please note: CDs, DVD's and Memory sticks are not acceptable.

Duplicate images and any similar or variant images are not allowed in another section of the same competition. Winning images and any similar or variant images are not allowed to enter another internal Club competition, not even in a different section.

Non-winning images of themed competitions (ie. Not Open), may be entered into an Open competition, or vice versa.

Scoring of the competitions will be by an invited external Judge. Judges will be advised to select First, Second, Third and as many Very Highly Commended (VHC), Highly Commended (HC) and Commended (C ) awards as they wish.

Scoring in each section of the competition will be as follows:

First	15 points	Very Highly Commended	12 points
Second	14 points	Highly Commended	11 points
Third	13 points	Commended	10 points

All other entries will score 5 points.

All scores will be counted towards the Photographer of the Year awards.

**Judges will be advised that images clearly not meeting the requirements above for entry should be marked appropriately and not be given an award no matter how good the image is in its own right (so they will score 5 pts).**

### **Photographer of the Year**

All scores from the seven internal club competitions will be accumulated to determine the Photographer of the Year, who will receive the following trophy:

Advanced:	Photographer of the Year – Rose Bowl
Standard:	Photographer of the Year – Shield

In addition, there will be a Photographer of the Year **Section Trophies** awarded for the highest aggregate scores in each section, as follows:

Advanced:	Colour Print Trophy – Mono Print Trophy – Projected Digital Image Trophy
Standard:	Colour Print Trophy – Projected Digital Image Trophy

### **Annual Exhibition Competition**

This is an Open (no restrictions) competition.

You may enter: 4 Colour prints, 4 Mono prints and 4 Projected Digital Images.

These can be new images or images used in the internal competitions (including winners).

The Judge will be advised to select; First, Second, Third and as many (VHC), (HC) and (C ) awards as they wish. The winning image in each section will receive an Annual Exhibition Trophy, as follows:

Advanced:	Colour Print Trophy – Mono Print Trophy – Projected Digital Image Trophy
Standard:	Colour Print Trophy – Projected Digital Image Trophy

**and also award a “Blue Ribbon Award” for the maximum number of points achieved in the Annual Exhibition Competition.**

When possible the presentations will be made at the opening of the Exhibition at a local gallery.

Updated April 2019

With explanation of images not meeting requirements of competition rules.

Inclusion of Photo Entry

Combining the Standard mono & colour print comps

Addition of a Blue Ribbon Award in the Annual

Exhibition Competition

Set Subject Competition selection method changed